

# Guinea Pig Handling



## Disclaimer

A series of booklets has been developed by the Clinical Skills Lab team (staff, recent graduates and students) from the School of Veterinary Sciences, University of Bristol, UK. Please note:

- Each booklet illustrates one way to perform a skill and it is acknowledged that there are often other approaches. Before using the booklets students should check with their university or college whether the approach illustrated is acceptable in their context or whether an alternative method should be used.
- The booklets are made available in good faith and may be subject to changes.
- In using these booklets you must adopt safe working procedures and take your own risk assessments, checked by your university, college etc. The University of Bristol will not be liable for any loss or damage resulting from failure to adhere to such practices.

This work is under the Creative Commons Attribution-NonCommercial-NoDerivatives 4.0 International License.



© The University of Bristol, 2023



University of  
**BRISTOL**



University of  
**BRISTOL**

## Equipment list: Guinea Pig Handling

Equipment for this station:

- Model guinea pig

Considerations for this station:

- The Exotics Practical Handling Booklet found in the Animal Management 2 section on blackboard → practicals → exotics, contains lots of useful exotics information.

Please inform a member of staff if equipment is damaged or about to run out.



# Clinical Skills: Guinea Pig Handling



1 To pick up a guinea pig, cup underneath its body with one hand and support its hind quarters with your other hand.



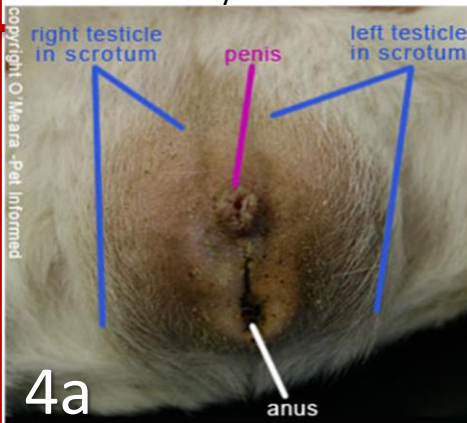
2 Hold against your body in a secure position.



3 To sex them, place one hand under the axilla and use your other hand to support their hind quarters with their ventrum facing away from you and their back supported by your body. You should do this over a table or in your lap. The anogenital area can then be examined.

## Male Guinea Pig

In the male animal, the penis can be extruded by gentle pressure cranial to the prepuce. It is possible to see a scrotum and testicles but only in mature males.



4a

## Female Guinea Pig

In the female animal, the anogenital area is Y shaped.



4b

5

## Injection sites



SC Injection site:  
Scruff of neck

IM injection site:  
Quadriceps  
muscles (cranial  
to femur, dorsal  
to stifle)

Intravenous  
injection site:  
cephalic vein

**Subcutaneous:** Scruff of neck

**Intramuscular:** Quadriceps- however avoid if possible as only small amount of muscle mass

**Intravenous:** Cephalic- very small!!

Avoid intraperitoneal in guinea pigs except in extreme circumstances due to the risk of gut puncture.



University of  
BRISTOL

# Resetting the station: Guinea Pig Handling

1. Return model to where you found it

*Station ready for the next person:*



Please inform a member of staff if equipment is damaged or about to run out.



University of  
BRISTOL

# I wish I'd known: Guinea Pig Handling

- Guinea pigs vocalise a lot but rarely bite.